

ACE IR E Series

Portable Thermal Camera



**Easy, Efficient,
Extraordinary**

E Series

Tool-like Thermal camera

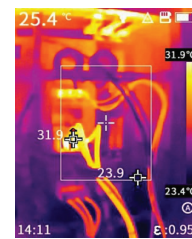
Introduction

ACE IR E Series tool-like thermal camera provides two configuration options of 120x90 and 256x192 IR detectors. It adopts the new real-time IR-Perfeclear technology to enhance the details and reduce noise of the image and present a clearer image in real time. Equipped with a series of professional functions such as 2MP visible light camera, video streaming and recording, WIFI, and OTA upgrade, etc., ACE IR E Series brings a clearer, more powerful and smoother work experience for users.

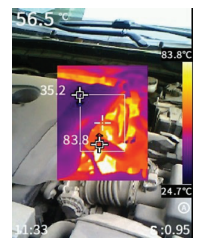
Features

- High-sensitive infrared detector, resolution 120x90/256x192
- Real-time IR-Perfeclear technology, 4 times better image quality
- -20°C~550°C wide temperature measurement range, automatic switch
- Photo and video recording, convenient sharing via mobile APP
- Video streaming, real-time data transmission with PC analysis software
- OTA firmware upgrade to keep the device up-to-date

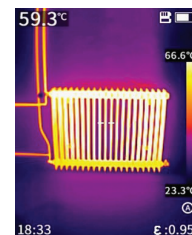
Applications



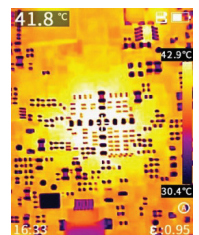
Electrical Application



Facilities maintenance



HVAC Inspection



PCBA detection

Specifications

Product model	E1	E1+	E2	E2+
Imaging and optics				
Detector type	VOx, 7.5 to 14μm			
Infrared resolution	120×90@17μm		256×192@12μm	
Super resolution	Support real-time super-resolution reconstruction, Upgrade to 240×180		Support real-time super-resolution reconstruction, Upgrade to 512×384	
NETD	60mK		45mK	
Frame rate	25Hz/9Hz			
Focal length	2.28mm		3.2mm	7mm
Field of view	50°×38°		56°×48°	25°×19°
I FOV	7.46mrad		3.75mrad	1.71mrad
Min. object distance	0.1m			
D:S	130:1		266:1	585:1
Focusing mode	Focus-free			Automatic
Measurement and analysis				
Measurement range	Support auto-switching: -20°C to 150°C, 0°C to 550°C			
Measurement accuracy	±2°C or ±2%, whichever is greater			
Analyzed target	Center spot; Three Fixed Areas: Small, Medium, Large (Alternative)			
Alarm	Full screen temperature threshold alarm (image and flash)			
Parameter settings	Emissivity, reflected temperature, target distance			
Image display				
Display screen	2.4" LCD			
Image mode	IR, VIS, MIF and PIP			
Color palettes	6: Iron Red, White Hot, Arctic, Rainbow 2, Hot Iron, Rainbow 1			
Image adjustment	Level span mode: Automatic, Semi-automatic, Manual			
Digital camera	2MP			
Functions				
Laser	Laser Indication			
Recording function	Photo and Video			
Storage and transmission				
Storage media	Built-in (16 GB)			
Image storage	JPG with temp info			
Video storage	Video storage format in Irgd (with temp info)	Supports real-time video streaming, video storage format in Irgd (with temp info)		
External interface	TYPE-C, UNC ¼"-20 (tripod mounting)			
WIFI	/	Yes, it can be connected to the mobile terminal for image and real-time video transmission		
Power system				
Battery type	Rechargeable lithium-ion battery, non-removable			
Operating time	8 hours		11 hours	
Charging mode	TYPE-C charging; PC/portable charger; Capable of charging while using			
Charging time	90% of full charge in 2.5 hours			
Environmental parameters				
Working temperature	-15°C to 50°C			
IP rating	IP54			
Drop	2m drop test			
Certification	CE, FCC, RoHS, KC, EAC, FDA, Anatel, IP54, 2m drop test, Damp heat test, Vibration test, Shock test, Impact test, UN38.3, MSDS			
Physical parameters				
Hardware	Illuminator			
Weight	355g		375g	
Size	194×61.5×76mm			
Software kit	PC: ThermoTools	PC: ThermoTools; Mobile: Thermography (iOS/Android)		
Standard	A device, Wrist strap, Power adapter, Adapter plug, Type-C USB cable, Data download card, Quick Start Guide, Warranty card, Inspection report			
Options	Tripod			