

SOLIDFLOW 2.0

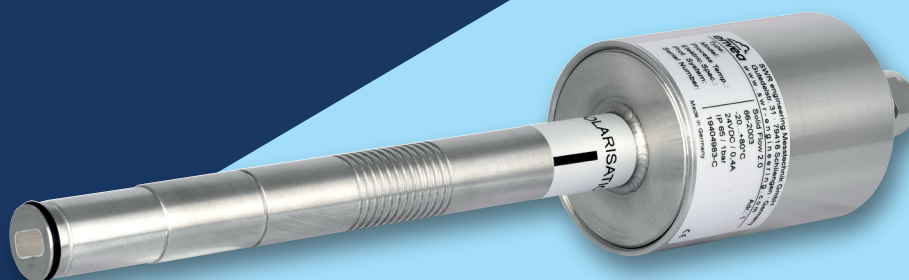
SOLID VOLUME MEASUREMENT



SolidFlow 2.0 measures the flow of solids with particle sizes between 1 μm and 10 mm

FEATURES AND BENEFITS

- Active roping compensation for highest reliability
- Can be used in free fall and in pneumatics
- Simple retrofitting using a welding socket
- No installations in the material stream
- Almost all types of dust, powder and granules can be measured
- Throughput measuring up to 20 t/h
- ATEX and IECEx certified
- MIC / TELEC certified



certified to ATEX

TECHNICAL SPECIFICATIONS

Sensor

Housing material	Stainless steel 1.4571
Protection type	IP65, DustEx zone 20 or GasEx zone 1 (optional)
Operating temperature	Front end of sensor: -20 ... + 80°C Optional: -20 ... +220°C Sensor electronic: 0 ... + 60°C
Max. working pressure	1 bar, optional 10 bar
Working frequency	K-Band 24.125 GHz, \pm 100 MHz
Transmitting power	Max. 5 mW
Weight	1.3 kg
Dimensions	\varnothing 60, \varnothing 20, L 271 mm
Accuracy	\pm 2 ... 5% in calibrated range
Connection cable	shielded cable 4-wired, 0.25 mm ²

